



CONSTRUCTION
COMPANY



ARGUS LIMITED ALLIANCE SHINKAR HOLDING

2016

ARGUSLIMITED.GE



Certified for
ISO 9001:2008



An associate
member of IPLOCA



The "Shinkar Holding" company is specialized in repair, manufacture, construction, architectural works and rental of special heavy plant and equipment (cranes, trucks, forklifts and atc.).

"Shinkar Hoding" was established in 1999, as "Shinkar Construction Company" by Alesker Mekhiev.

CONSTRUCTION PROJECTS

SOCIAL PROJECTS

(projects with the state value, purposeful on well being of inhabitants, on sports and health)

INDUSTRIAL CONSTRUCTION

(construction of plants and factories of production facilities)

TOURISM

(implementation of projects planned for tourism and resting)

SETTLEMENTS AND VILAGES

(the new settlements constructed in various regions within the program of development regions)







LIEBHERR **LHM 280** Mobile Crane

TECHNICAL INDICATORS

Model:	LHM 280
Issue date:	2014
The possibility of maximum lifting:	280 t
The length of axis:	45 m
The radius of maximum lifting:	45 m
Country of manufacturer:	Austria
Quantity:	1 pcs



LIEBHERR
LT 1250-6.1
Mobile Crane

TECHNICAL INDICATORS

Model:	LT 1250-6.1
Issue date:	2012
The possibility of maximum lifting:	250 t
The length of axis:	72 m
The radius of maximum lifting:	66 m
Country of manufacturer:	Germany
Quantity:	1 pcs



LIEBHERR
LTR 1220
Mobile Crane

TECHNICAL INDICATORS

Model:	LTR 1220
Issue date:	2014
The possibility of maximum lifting:	220 t
The length of axis:	60 m
The radius of maximum lifting:	56 m
Country of manufacturer:	Germany
Quantity:	2 pcs



LIEBHERR
LTM 1200-5.1
Mobile Crane

TECHNICAL INDICATORS

Model:	LTM 1200-5.1
Issue date:	2013
The possibility of maximum lifting:	200 t
The length of axis:	72 m
The radius of maximum lifting:	66 m
Country of manufacturer:	Germany
Quantity:	1 pcs



LIEBHERR
LTM 1160-5.1
Mobile Crane

TECHNICAL INDICATORS

Model:	LTM 1160-5.1
Issue date:	2012
The possibility of maximum lifting:	160 t
The length of axis:	62 m
The radius of maximum lifting:	58 m
Country of manufacturer:	Germany
Quantity:	2 pcs



LIEBHERR
LTM 1150-6.1
Mobile Crane

TECHNICAL INDICATORS

Model:	LTM 1150-6.1
Issue date:	2012
The possibility of maximum lifting:	150 t
The length of axis:	66 m
The radius of maximum lifting:	62 m
Country of manufacturer:	Germany
Quantity:	1 pcs



LIEBHERR
LTM 1130-5.1
Mobile Crane

TECHNICAL INDICATORS

Model:	LTM 1130-5.1
Issue date:	2013-2014
The possibility of maximum lifting:	130 t
The length of axis:	62 m
The radius of maximum lifting:	58 m
Country of manufacturer:	Germany
Quantity:	4 pcs



LIEBHERR **LTM 1100-5.2** Mobile Crane

TECHNICAL INDICATORS

Model:	LTM 1100-5.2
Issue date:	2013
The possibility of maximum lifting:	100 t
The length of axis:	52 m
The radius of maximum lifting:	48 m
Country of manufacturer:	Germany
Quantity:	2 pcs



LIEBHERR **LTM 1100-4.2** Mobile Crane

TECHNICAL INDICATORS

Model:	LTM 1100-4.2
Issue date:	2013
The possibility of maximum lifting:	100 t
The length of axis:	60 m
The radius of maximum lifting:	56 m
Country of manufacturer:	Germany
Quantity:	1 pcs



LIEBHERR
LTM 1095-5.1
Mobile Crane

TECHNICAL INDICATORS

Model:	LTM 1095-5.1
Issue date:	2013-2014
The possibility of maximum lifting:	95 t
The length of axis:	58 m
The radius of maximum lifting:	54 m
Country of manufacturer:	Germany
Quantity:	3 pcs



LIEBHERR
LTM 1070-4.2
Mobile Crane

TECHNICAL INDICATORS

Model:	LTM 1070-4.2
Issue date:	2012-2014
The possibility of maximum lifting:	70 t
The length of axis:	50 m
The radius of maximum lifting:	48 m
Country of manufacturer:	Germany
Quantity:	7 pcs



LIEBHERR
LTM 1060-3.1
Mobile Crane

TECHNICAL INDICATORS

Model:	LTM 1060-3.1
Issue date:	2014
The possibility of maximum lifting:	60 t
The length of axis:	48 m
The radius of maximum lifting:	45 m
Country of manufacturer:	Germany
Quantity:	1 pcs



LIEBHERR
LTR 1060
Mobile Crane

TECHNICAL INDICATORS

Model:	LTR 1060
Issue date:	2014
The possibility of maximum lifting:	60 t
The length of axis:	40 m
The radius of maximum lifting:	38 m
Country of manufacturer:	Germany
Quantity:	2 pcs



**XCMG
QY70K**
Mobile Crane

TECHNICAL INDICATORS

Model:	XCMG QY70K
Issue date:	2012
The possibility of maximum lifting:	70 t
The length of axis:	45 m
The radius of maximum lifting:	43 m
Country of manufacturer:	China
Quantity:	2 pcs



**TEREX
RT-45**
Mobile Crane

TECHNICAL INDICATORS

Model:	TEREX RT-45
Issue date:	2014
The possibility of maximum lifting:	45 t
The length of axis:	37 m
The radius of maximum lifting:	35 m
Country of manufacturer:	Italy
Quantity:	2 pcs



**XCMG
QY50K**
Mobile Crane

TECHNICAL INDICATORS

Model:	XCMG QY50K
Issue date:	2012
The possibility of maximum lifting:	50 t
The length of axis:	40 m
The radius of maximum lifting:	38 m
Country of manufacturer:	China
Quantity:	2 pcs



**XCMG
QY25K5**
Mobile Crane

TECHNICAL INDICATORS

Model:	XCMG QY25K5
Issue date:	2012
The possibility of maximum lifting:	25 t
The length of axis:	39 m
The radius of maximum lifting:	37 m
Country of manufacturer:	China
Quantity:	3 pcs



FM GRU **2675 TLX 16** Tower Crane

TECHNICAL INDICATORS

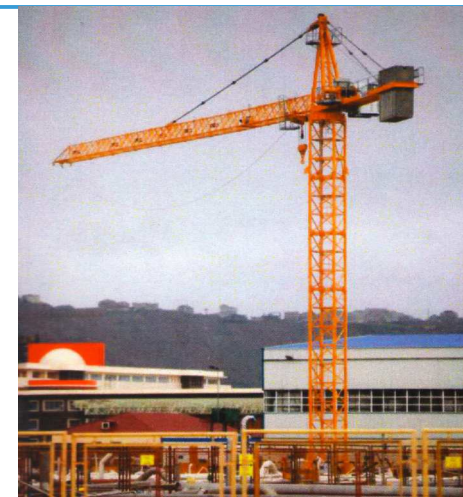
Model:	FM GRU 2675 TLX 16
Issue date:	2014
The possibility of maximum lifting:	16 t
The length of axis:	55 m
The radius of maximum lifting:	55 m
Country of manufacturer:	Italy
Quantity:	1 pcs



FM GRU **1358 TCKP 10** Tower Crane

TECHNICAL INDICATORS

Model:	FM GRU 1358 TCKP 10
Issue date:	2014
The possibility of maximum lifting:	10 t
The length of axis:	55 m
The radius of maximum lifting:	55 m
Country of manufacturer:	Italy
Quantity:	2 pcs



**MANITOU
MRT-2540**
Telescopic
mechanism

TECHNICAL INDICATORS

Model:	MANITOU MRT - 2540
Issue date:	2011
The possibility of maximum lifting:	4 t
The length of axis:	25 m
The radius of maximum lifting:	25 m
Country of manufacturer:	Italy
Quantity:	4 pcs



**MANITOU
MRT-2150**
Telescopic
mechanism

TECHNICAL INDICATORS

Model:	MANITOU MRT - 2150
Issue date:	2011
The possibility of maximum lifting:	5 t
The length of axis:	21 m
The radius of maximum lifting:	21 m
Country of manufacturer:	Italy
Quantity:	17 pcs



**MANITOU
MT-1840**
Telescopic
mechanism

TECHNICAL INDICATORS

Model:	MANITOU MT - 1840
Issue date:	2011
The possibility of maximum lifting:	4 t
The length of axis:	18 m
Country of manufacturer:	France
Quantity:	5 pcs



**FORKLIFT
KALMAR**
Forklift

TECHNICAL INDICATORS

Model:	Forklift Kalmar
Issue date:	2012
The possibility of maximum lifting:	12-16 t
Country of manufacturer:	Germany
Quantity:	3 pcs



**FORKLIFT
LINDE H320**
Forklift

TECHNICAL INDICATORS

Model:

Forklift

Linde H320

Issue date:

2012

The possibility of maximum lifting:

32 t

Country of manufacturer:

Germany

Quantity:

1 pcs



**FORKLIFT
HYSTER**
Forklift

TECHNICAL INDICATORS

Model:

Forklift Hyster

Issue date:

2011

The possibility of maximum lifting:

8-16 t

Country of manufacturer:

France

Quantity:

3 pcs



**FORKLIFT
STILL**
Forklift

TECHNICAL INDICATORS

Model:

Forklift

Still

Issue date:

2012

The possibility of maximum lifting:

3.5 - 5 t

Country of manufacturer:

Germany

Quantity:

3 pcs



**FORKLIFT
LINDE**
Forklift

TECHNICAL INDICATORS

Model:

Forklift Linde

2009

Issue date:

The possibility of maximum lifting:

1.6 - 7 t

Country of manufacturer:

Germany

Quantity:

7 pcs



MERCEDES

Truck

TECHNICAL INDICATORS

Model:	Mercedes
Issue date:	2010-2011
The possibility of maximum lifting:	36 - 72 t
Country of manufacturer:	Germany
Quantity:	30 pcs



DAF

Truck

TECHNICAL INDICATORS

Model:	DAF
Issue date:	2010 - 2011
The possibility of maximum lifting:	36 - 72 t
Country of manufacturer:	Germany
Quantity:	24 pcs



MAN Truck

TECHNICAL INDICATORS

Model:	MAN
Issue date:	2008-2009
The possibility of maximum lifting:	36 - 72 t
Country of manufacturer:	Germany
Quantity:	17 pcs

